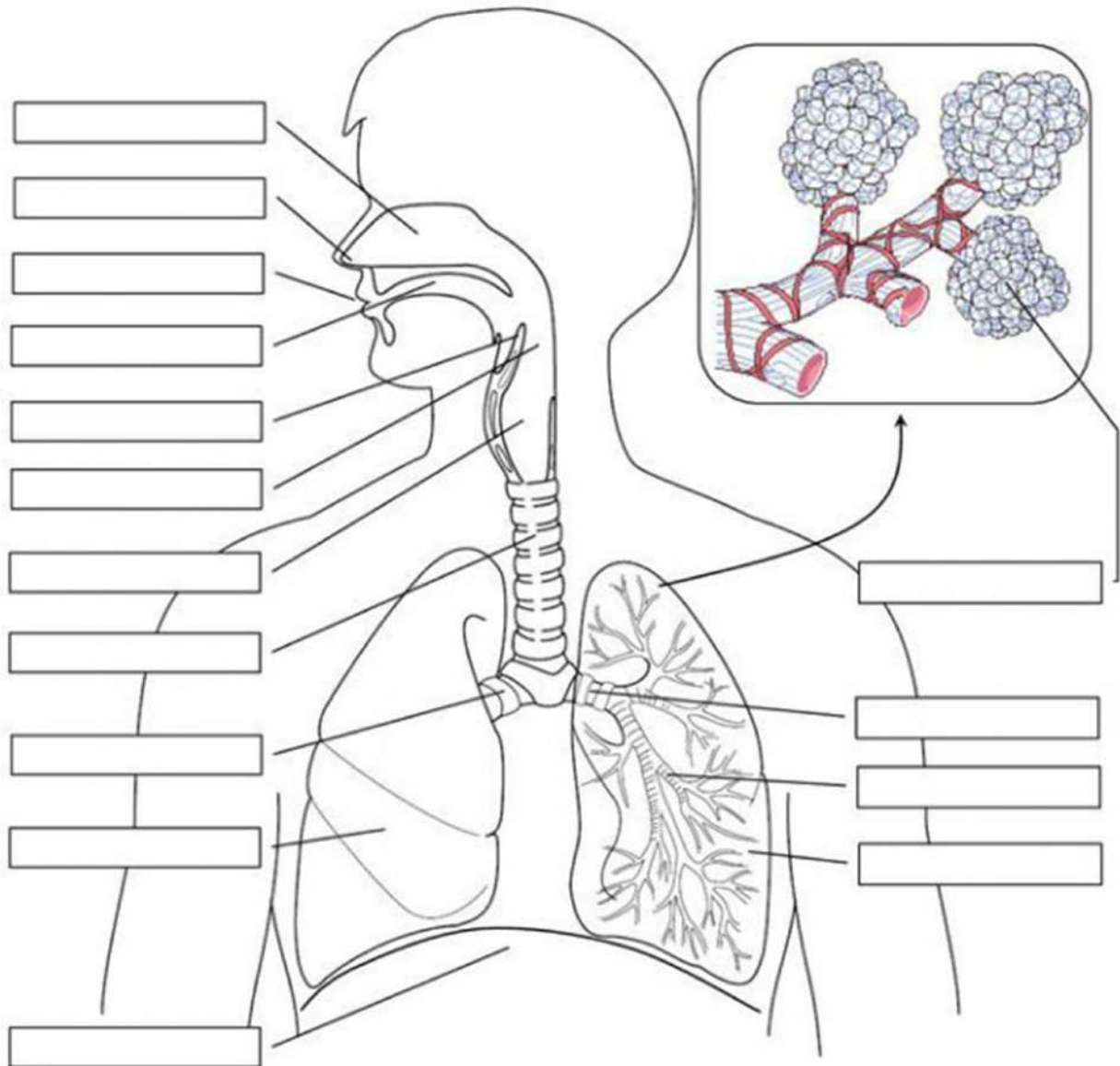


Human Body System

Label the diagram of the respiratory system below with the following parts, then colour your diagram.

- | | | | | |
|----------------|--------------------|------------|------------------|-------------|
| left bronchus | trachea | mouth | pharynx (throat) | diaphragm |
| nose | alveoli | right lung | left lung | oral cavity |
| right bronchus | larynx (voice box) | bronchiole | nasal cavity | epiglottis |



FOLLOW US ON: