

# Unlocking the Extraordinary: The Science of Your Home

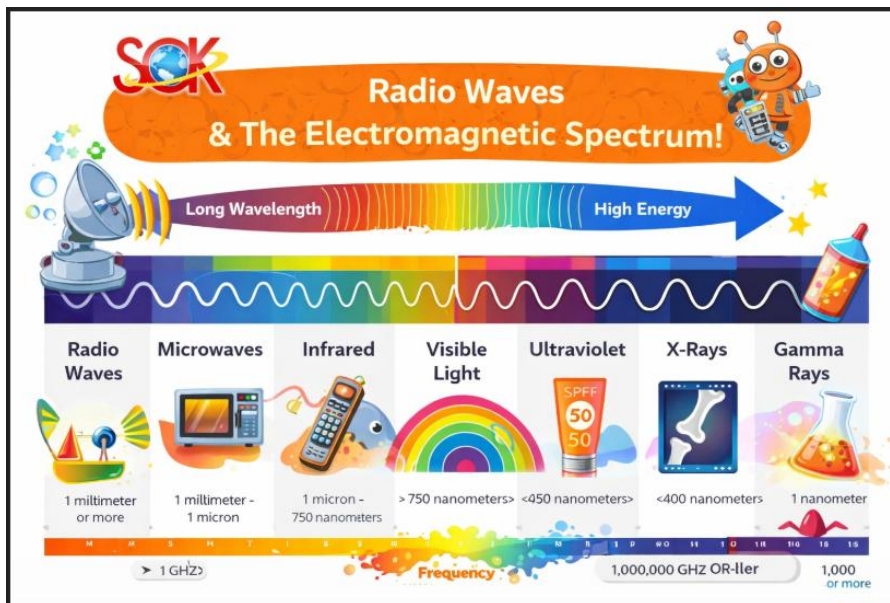
---

A Parent's Guide to the STEM Behind Everyday Wonders

## Index

1. The Invisible Magic of WiFi
2. The Chemistry of the Perfect Cookie
3. How a Touchscreen Actually 'Feels' You
4. The Physics of Your Toaster
5. Why Does Soap Clean?
6. The Logic of Traffic Lights

## The Invisible Magic of WiFi



This colorful diagram shows the **electromagnetic spectrum** in a fun and easy way for kids to understand. It begins with **radio waves**, which have long wavelengths and low energy, and moves through **microwaves, infrared, visible light, ultraviolet, X-rays, and gamma rays**, which have shorter wavelengths and higher energy. The bright rainbow in the middle represents **visible light**, the only part we can see with our eyes. Arrows help show how energy increases as wavelengths get smaller. Fun illustrations like satellites, devices, and lab tools make each section relatable to everyday life. This visual helps young learners understand how different types of waves are connected and how they are used in technology, communication, and science.

### The Science

WiFi works using radio waves, a type of electromagnetic radiation. A router converts data from binary strings into radio waves through frequency modulation. These waves travel at the speed of light to your device's antenna.

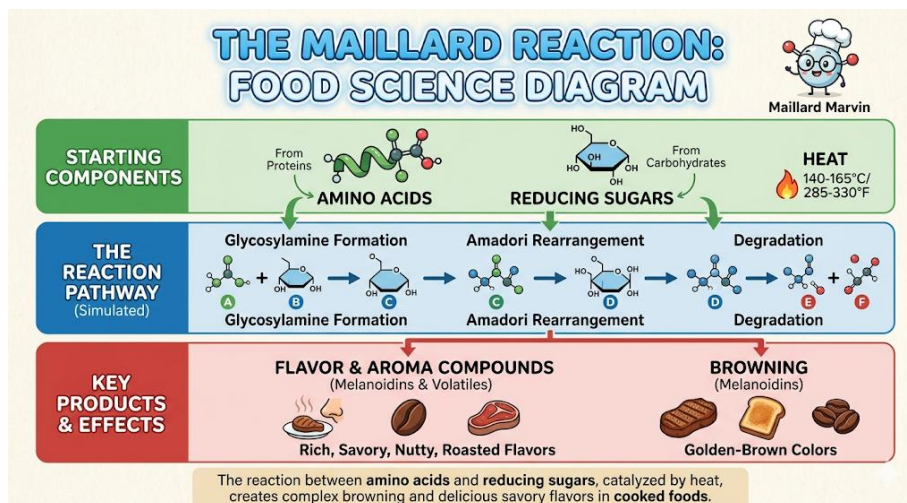
### The STEM Connection

Gateway to coding and networking. Concepts: Latency, bandwidth, and signal-to-noise ratios.

### Experiment Corner

The WiFi Map: Use a signal strength app to test how different materials (brick, wood, metal) interfere with radio waves.

## The Chemistry of the Perfect Cookie



This diagram explains the **Maillard Reaction**, the science behind the savory flavors and golden colors in cooked food. It breaks the process into three simple steps:

1. **Starting Components:** Amino acids from proteins and reducing sugars from carbohydrates combine when **Heat** (140°C–165°C) is applied.
2. **Reaction Pathway:** Guided by "Maillard Marvin," molecules undergo complex changes, including glycosylamine formation and Amadori rearrangement, to create new structures.
3. **Key Products & Effects:** The result is the production of **Melanoidins** for browning and aromatic compounds that give roasted meat, coffee, and toast their delicious, nutty profiles.

It's a perfect visual for showing how heat transforms raw ingredients into a rich sensory experience.

### The Science

Baking involves the Maillard reaction (at 310°F), where proteins and sugars rearrange to create flavor. It also involves caramelization and the denaturation of egg proteins.

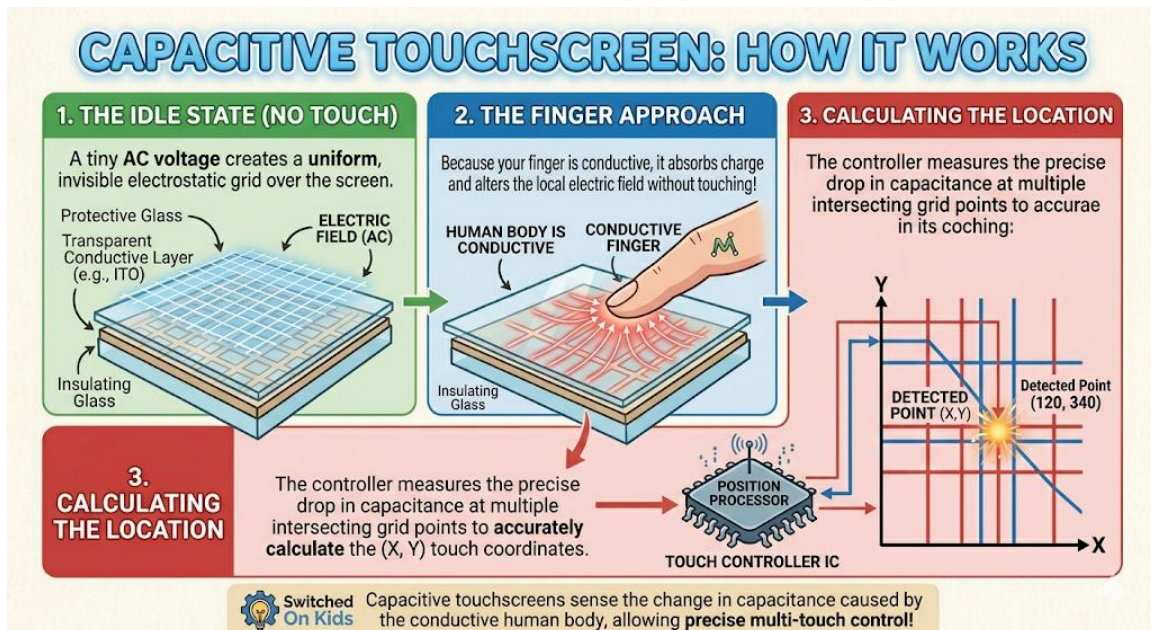
### The STEM Connection

Chemical engineering and precision measurement. Understanding how pH levels (bases like baking soda) affect reactions.

### Experiment Corner

The Variable Test: Bake batches with different butter temperatures or varying amounts of leavening agents and record the structural results.

## How a Touchscreen Actually 'Feels' You



This diagram illustrates the working principle of a **Capacitive Touchscreen**, which relies on the electrical properties of the human body.

- Idle State:** An invisible electrostatic grid is created by a tiny voltage across a conductive layer.
- Finger Approach:** Since your skin is conductive, your finger absorbs some of the charge, causing a local drop in capacitance.
- Calculation:** A position processor measures where this drop occurs on the X and Y axes to determine the exact coordinates of your touch.

This technology allows for the precise, multi-touch control we use daily on smartphones and tablets.

### The Science

Capacitive touchscreens use a conductive layer (Indium Tin Oxide). Because the human body conducts electricity, touching the screen creates a voltage drop at a specific X, Y coordinate.

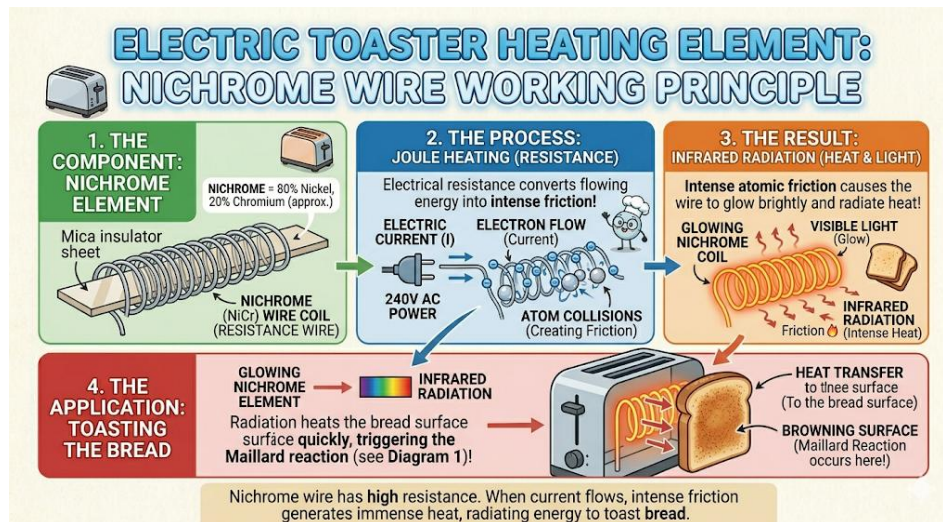
### The STEM Connection

Hardware engineering and electrical circuits. Integrating physical inputs with software event listeners.

### Experiment Corner

The Conductivity Test: Test different household items (carrots, metal, plastic) to see which can complete the capacitive circuit.

## The Physics of Your Toaster



This diagram explains how a toaster uses electricity to cook your bread through a process called Joule Heating.

- The Component:** The heating element is made of **Nichrome wire**, a special blend of Nickel and Chromium wrapped around a heat-resistant mica sheet.
- The Process:** As electricity flows through the wire, it meets high resistance. This causes electrons to collide with atoms, creating intense friction and heat.
- The Result:** The wire glows bright orange and emits **Infrared Radiation**. This energy travels through the air to reach the bread.
- The Application:** This intense heat triggers the **Maillard Reaction** on the surface of the bread, turning it from soft dough into crispy, golden-brown toast.

### The Science

Toasters use Nichrome wire. Because of its high electrical resistance, electrons bumping into atoms generate heat (Joule Heating), causing the wire to glow red.

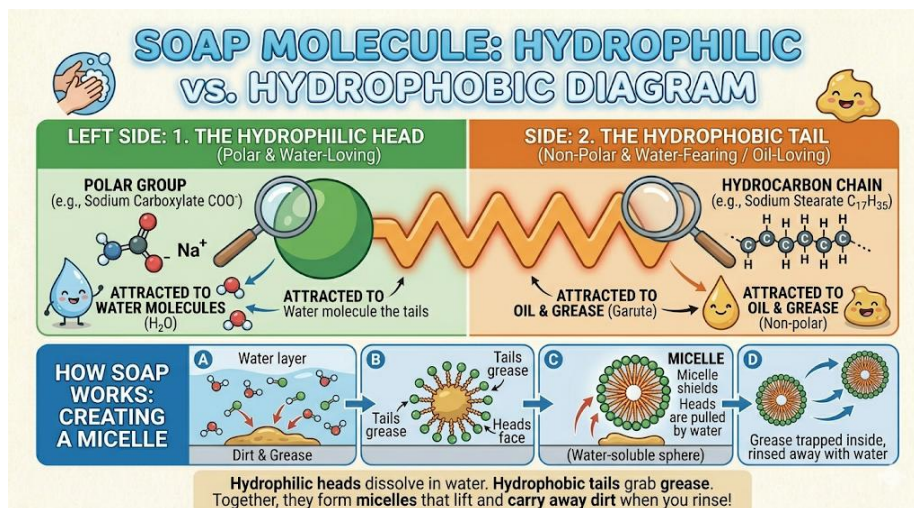
### The STEM Connection

Thermodynamics and material science. Energy transformation: Electrical -> Thermal -> Radiant.

### Experiment Corner

Data Plotting: Time the toasting process across different settings and graph the results to see if the heat-to-time ratio is linear.

## Why Does Soap Clean?



This diagram illustrates how soap molecules work to remove dirt and grease, which is essential for effective handwashing.

**1. Molecular Structure:** A single soap molecule has two parts: a **hydrophilic (water-loving) head** and a **hydrophobic (water-fearing) tail**. This dual nature allows it to interact with both water and oils.

**2. Forming a Micelle:** When washing, many soap molecules surround a grease or dirt particle, forming a tiny sphere called a **micelle**. The hydrophobic tails turn inward, grabbing the grease, while the hydrophilic heads point outward toward the water.

**3. Cleaning:** This action allows the grease to be lifted off the surface and suspended in the water, which can then be easily rinsed away!

### The Science

Soap molecules are amphiphilic. The hydrophobic tail grabs grease/viruses, while the hydrophilic head stays in the water, allowing the 'grime' to be washed away.

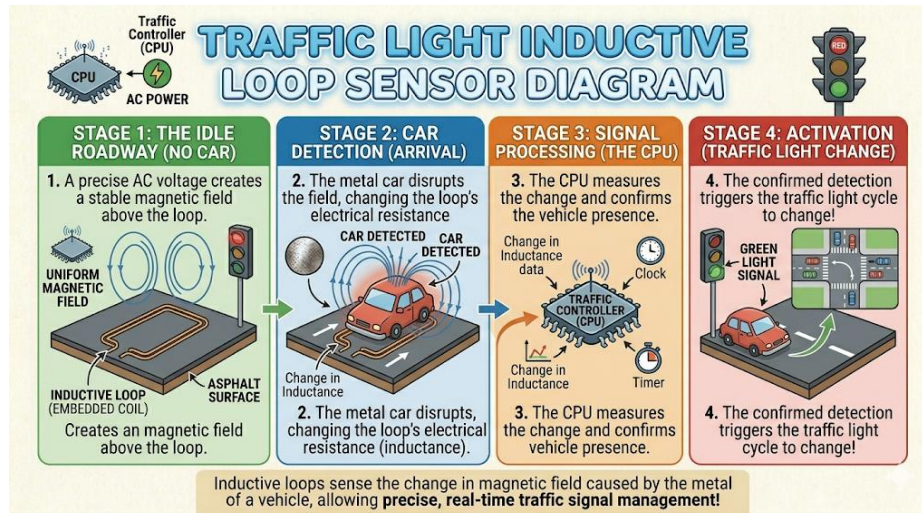
### The STEM Connection

Molecular biology and surface tension. Understanding polar vs. non-polar substances.

### Experiment Corner

The Pepper Stampede: Sprinkle pepper on water and touch it with soap to see surface tension break instantly.

## The Logic of Traffic Lights



This diagram illustrates how an **Inductive Loop Sensor** detects vehicles at traffic lights. It uses a buried wire coil that acts as an electromagnet. When a metal car drives over the loop, it disrupts the magnetic field, changing the coil's inductance. The traffic light controller detects this precise change and uses the data to manage signal timings in real-time, ensuring efficient traffic flow. It's a key component of automated traffic control systems.

### The Science

Traffic lights use Inductive Loops (wire coils in the road) that detect changes in inductance when a metal car passes over them, signaling the controller.

### The STEM Connection

Systems engineering and algorithmic logic. Real-world 'If-Then-Else' logic gates and sensor integration.

### Experiment Corner

Reverse Engineering: Observe a local intersection and try to write a pseudocode algorithm that explains the light cycles.